

7X1X0 Architecture and the city

Written Exam 7X1X1

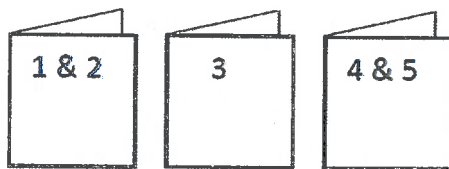
Lecturers: Jacob Voorthuis, Maarten Willems & Anne Marie Peters-van den Heuvel

Exam: Thursday 05.11.2015: 09:00 - 12:00 Place PAV SH2 E 159

Duration exam: 3 hours

WRITE YOUR NAME AND STUDENT NUMBER ON EACH SHEET OF PAPER YOU HAND IN AT THE END

PLEASE ANSWER QUESTIONS 1 & 2 FOR JACOB VOORTHUIS, QUESTION 3 FOR ANNE MARIE PETERS AND QUESTION 4 & 5 FOR MAARTEN WILLEMS ON SEPARATE SHEETS OF PAPER.



The exam consists of five questions which together make up 100 points (20 points each). The final grade will be made up of the total number of points achieved divided by 10. **You must answer the questions in English, you may use an appropriate dictionary.**

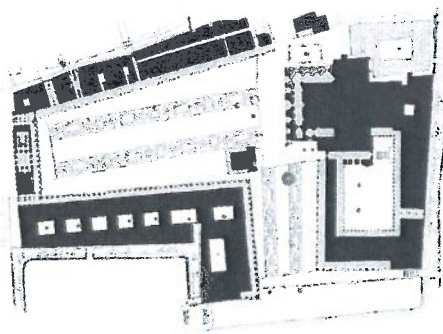
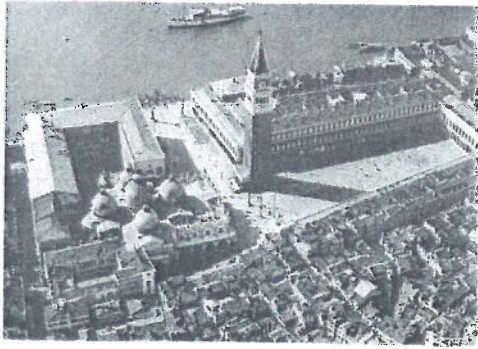
Read the questions carefully. Divide your time between the questions sensibly.

Question 1 (for Jacob Voorthuis)

Give a short definition of the word **Zeitgeist**. Use an example of your own choice, to explain what is meant by the word. Don't forget to explain *how* the example illustrates the concept ($\pm 200 - 300$ words)

Question 2 (for Jacob Voorthuis)

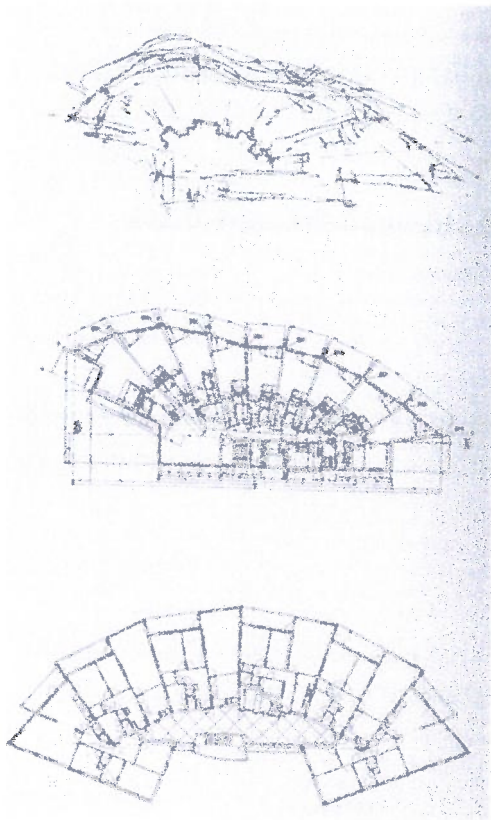
The pictures below are of St Mark's square in Venice. It is a good example of the concept of **scenography**. Please explain this concept in simple diagrams and words (± 200) using St. Mark's Square as your example.



Aerial view and Plan of St Mark's Square Venice

Question 3 (for Anne Marie Peters van den Heuvel)

Can you explain what is meant by the term '**generative typology**'? Is it used by researchers or designers? And how is it being used? You can use the image (taken from the reader) to help you with your explanation.

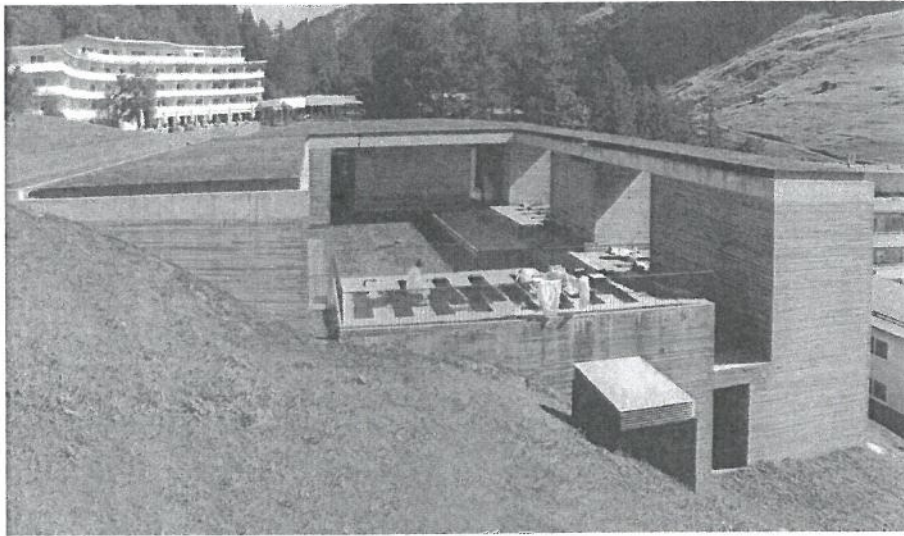


Question 4 (for Maarten Willems) This is the **thermal bath** ('Therme') in Vals (Switzerland) by the Swiss architect **Peter Zumthor**, opened in **1996**.

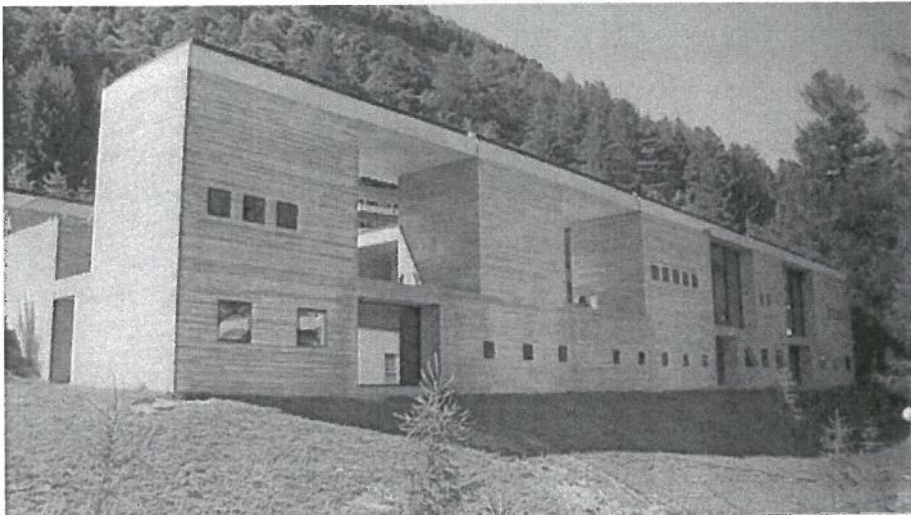
Make a simple sketch and give a concise explanation of how Peter Zumthor handles:

- a. organization
- b. circulation
- c. enclosure

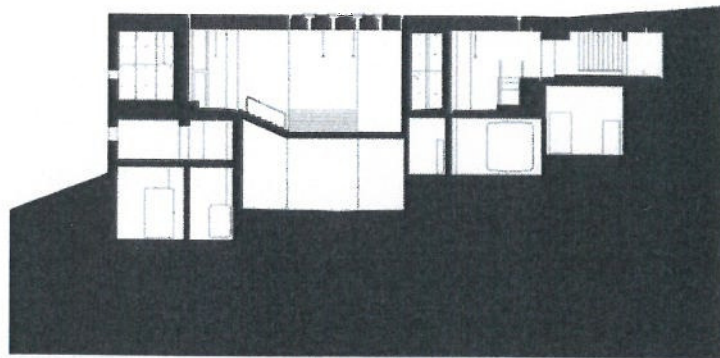
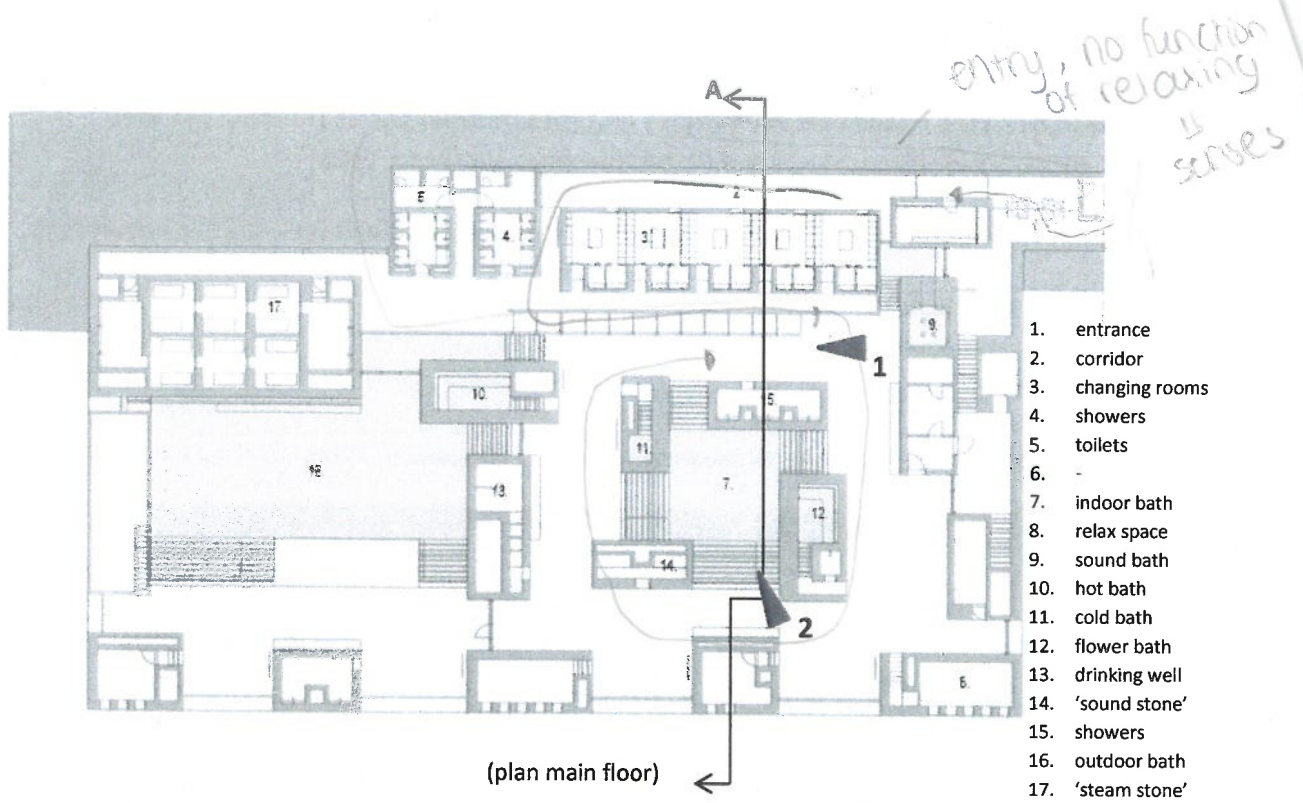
Each concept in one hand drawing plus 60 - 100 words. (Total: 1,5 to 2 x A4, ± 30 min.)



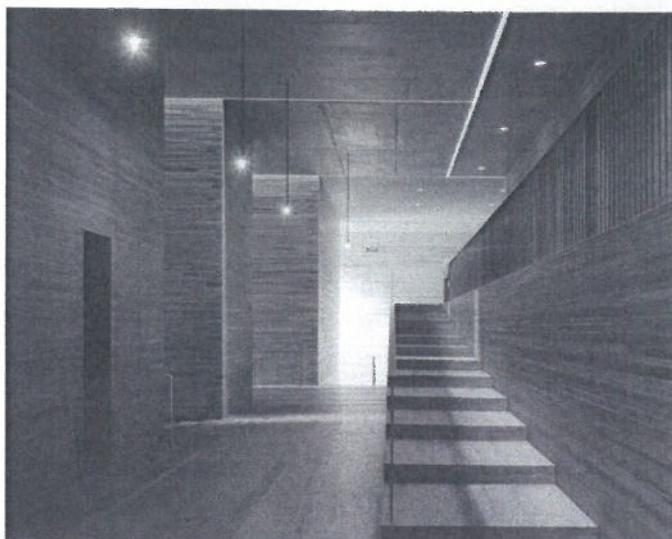
(exterior)



(exterior – front)



(cross section A)



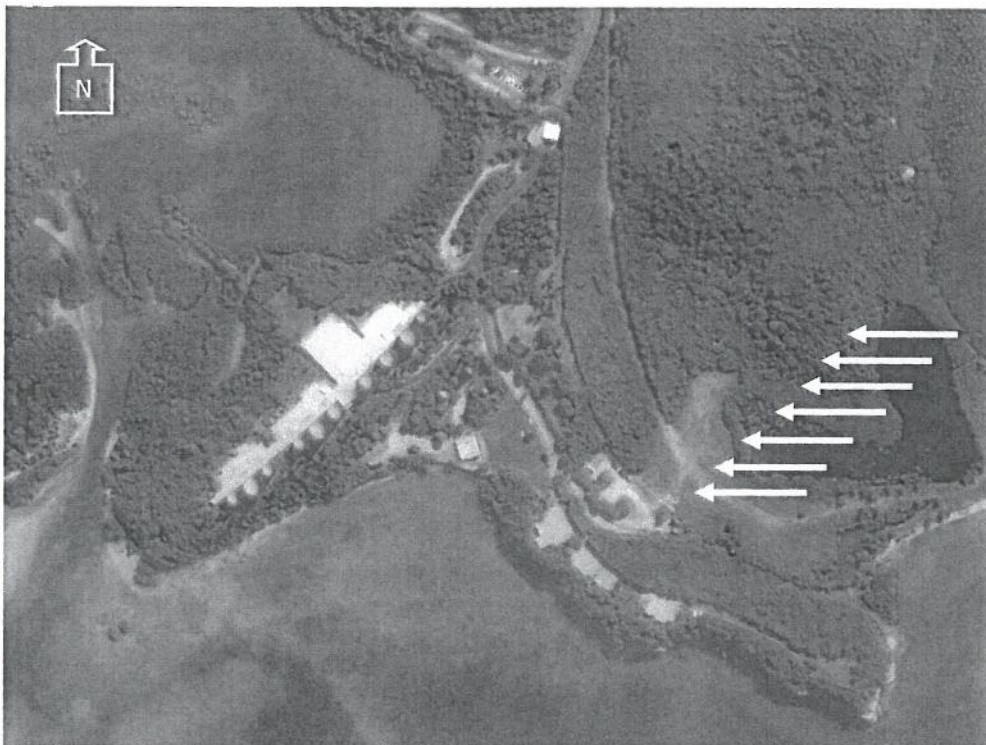
(interior views 1 (left) and 2 (right))

Question 5 (for Maarten Willems) This is the cultural centre *Jean-Marie Tjibaou* on the island **New Caledonia** (Pacific) designed by the Italian architect **Renzo Piano** and completed in **1998**.

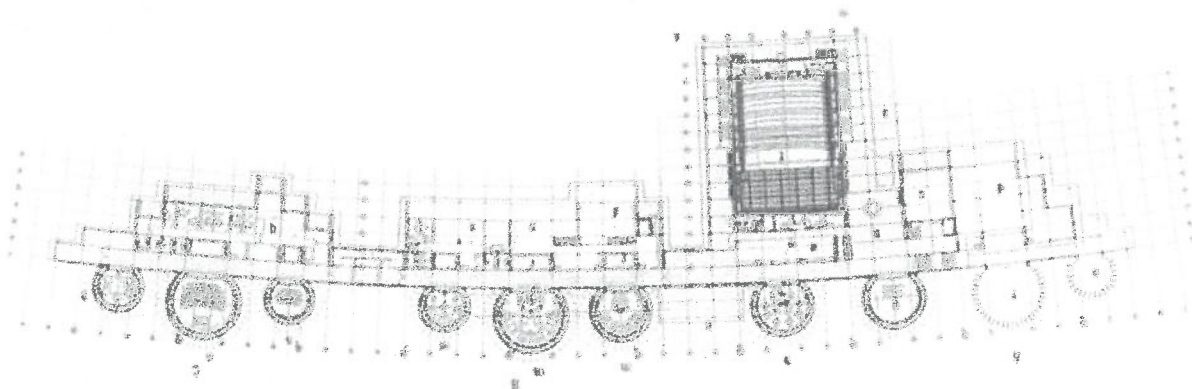
Provide a brief description of the building design in which you focus on the (inter-related) aspects:

- climate
- local / vernacular

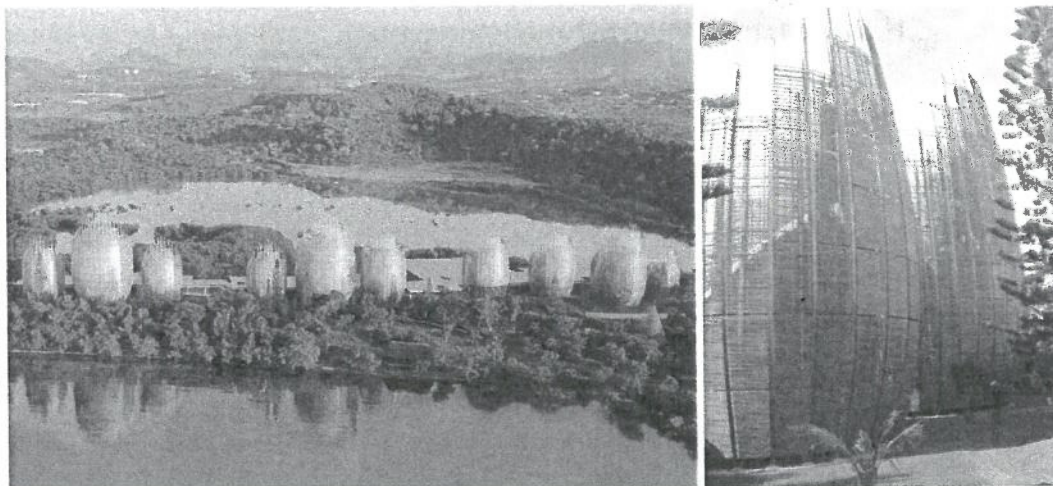
Guideline: 300 words. Additional sketches optional. (1 to 1,5 x A4, ± 30 min.)



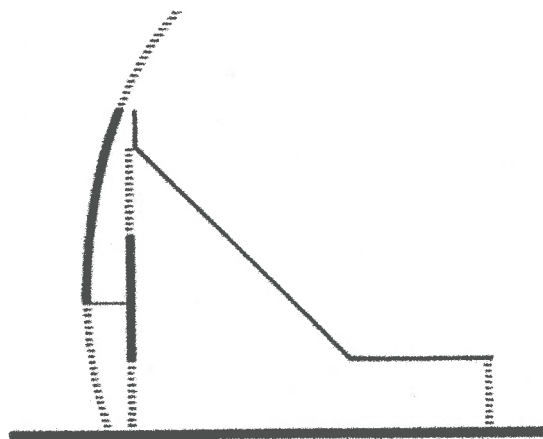
(aerial view, showing prevailing winds)



(plan)



(aerial view and exterior impression)



(diagram of section)



(panoramic view - with traditional huts in front, as part of the outdoor exhibit.)